



CarboCAT[®]

Passenger Ferries



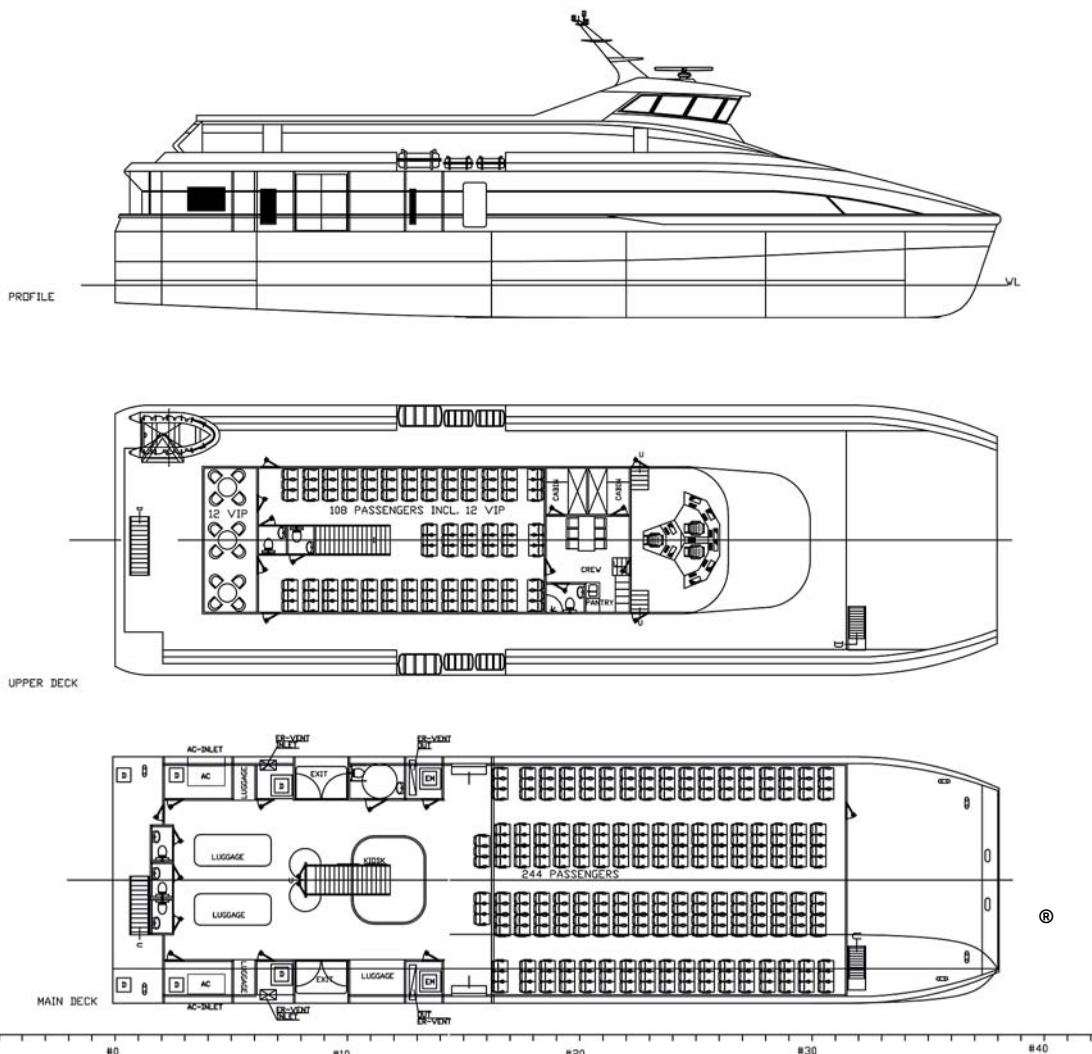
The carbon fiber sandwich technology reduces the structural weight by 30% compared with aluminum structures.

This contributes 20% lower fuel consumption and reduction in CO₂ emission.

With carbon fiber material, significant reduction in maintenance and life cycle costs.

High safety characteristics due to sandwich construction and double bottom structure.

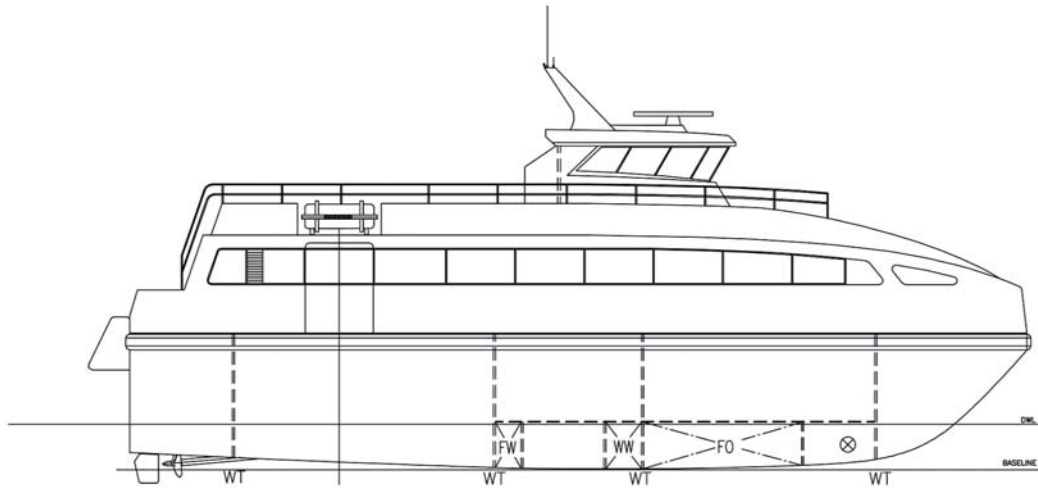
CarboCAT[®] CC38



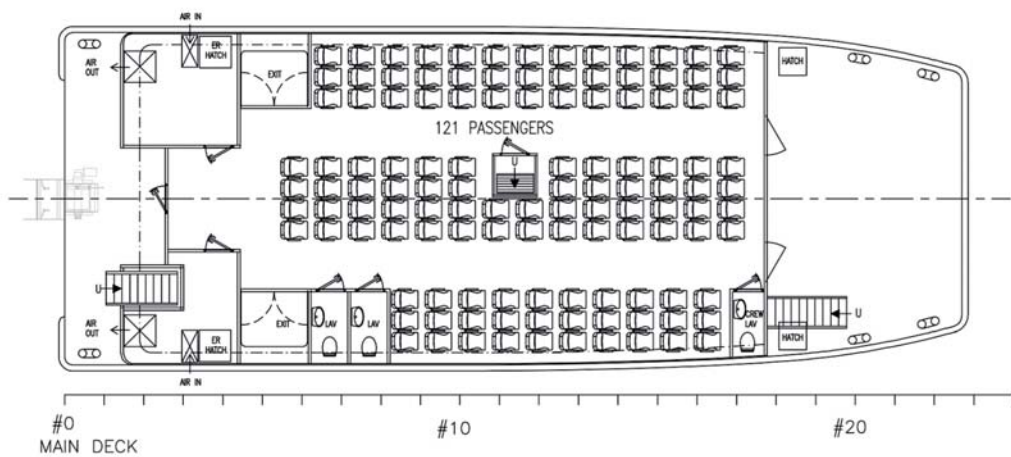
Technical data CC 38-350 Pax

Length overall	38 m
Beam overall	10,6 m
Draught of hull	1,4 m
Service Speed	31 knots (83%MCR)
Crew	4
Passenger	352
Engine	2 x MTU 16V2000 M72
Propulsor	2 x CPP
Class notification	DNV +1A1 HSLC R2 PASSENGER

CarboCAT[®] CC23



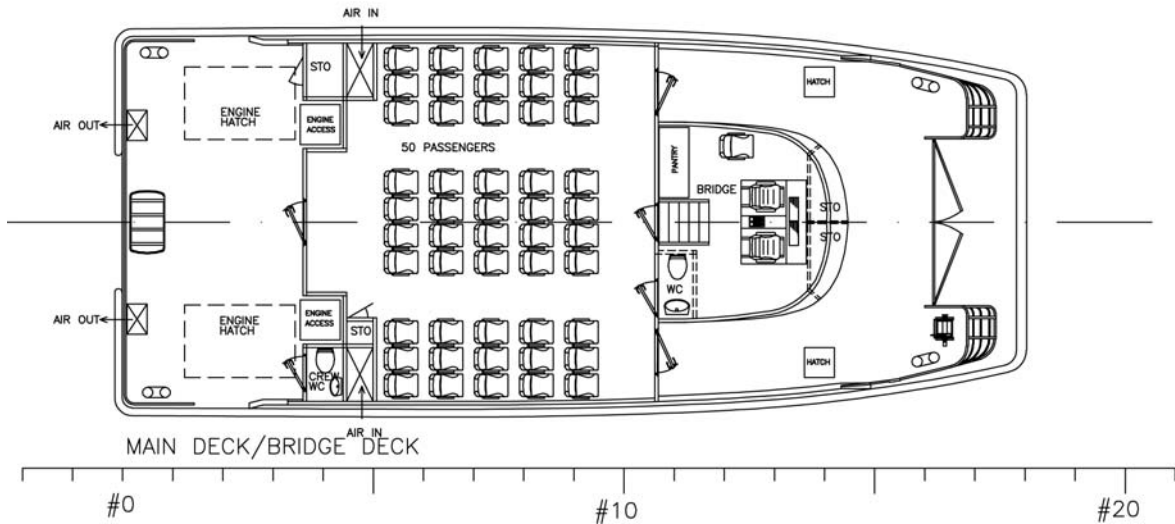
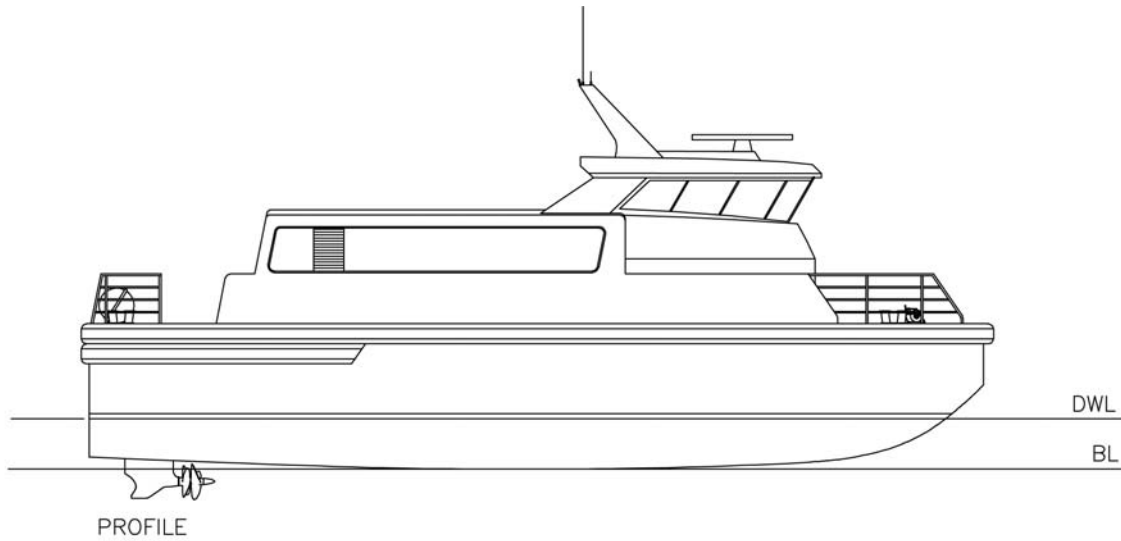
SIDE VIEW



Technical data CC 23 -120 Pax

Length overall	23,4 m
Beam overall	8,8 m
Draught of hull	1,1 m
Service Speed	25 knots (70%MCR)
Crew	4
Passenger	121
Engine	2 x MTU 8V2000
Propulsor	2 x CPP
Class notification	DNV +1A1 HSLC R2 PASSENGER

CarboCAT[®] CC18



Technical data CC 18 -50 Pax

Length overall	18,4 m
Beam overall	7,7 m
Draught of hull	0,9 m
Draught of IPS	1,4 m
Service Speed	24 knots (70%MCR)
Crew	3
Passenger	50
Engines	2 x Volvo penta D13
Propulsor	2 x Volvo penta IPS1050
Class notification	DNV +1A1 HSLC R2 PASSENGER



Amiralitetsgatan 25
SE-371 82
Karlskrona, Sweden
www.kockums.se



Bergtalstraße 24
CH-9500 Wil
Switzerland
www.fintray-marine.com